

PowerLines

April 2024

Welcome to Springtime

Spring and the Easter season both symbolize for us a season of renewal and hope. We are past the darkness of winter and look forward to new growth and new life springing forth. It is good to see the robins and cardinals and other songbirds emerge from their winter locations.

Strategic Planning

Your board of directors and senior staff met in late February for the triennial strategic planning retreat, which was facilitated by personnel from one of our bankers, CFC (the National Rural Utilities Cooperative Finance Corporation). The previous strategic planning session was held during August 2020. Seven primary areas of focus were identified:

- Safety
- Financial Strength
- Member Engagement
- Operation Excellence
- Technology
- Human Resources and Governance
- Growth and Strategy

Each area had additional high-level goals identified, which staff and the board will further refine by adding more specific action item details over the next few months.

As an example of high-level goals for technology that were identified: 1) Enhance cybersecurity training program; 2) Develop technology work plan; 3) Enhance system automation & efficiency.

Illinois Legislature

As I mentioned in a recent column, the Illinois legislature is back in session. Initially, our statewide association, AIEC (the Association of Illinois Electric Cooperatives), which monitors legislative activity and represents the Illinois electric cooperative's interests, did not anticipate significant proposed or impactful legislation for us.

However, this has changed in the interim. Proposed bills that could impact the future of our supply resources, solar and other renewable installations, the cooperative governance, and business model, as well as possible state regulatory oversight have been progressing through the committee structure. We may be requesting your assistance to contact our respective state legislators as the process moves along. This request may be via email, text, or our social media sites. Please enjoy below the picture from a recent trip to Colorado. Enjoy Spring!

Bob Hunzinger



On a recent trip to Colorado, we visited Leadville at 10,152 feet above sea level, which is the highest incorporated city in North America. Colorado's two tallest fourteeners - mountains higher than 14,000 feet, tower above the area: Mount Massive, 14,429 (on the right), and Mount Elbert, (on the left) which is the tallest mountain in Colorado coming in at 14,443 feet. The Rocky Mountains have 58 mountains that rise more than 14,000 feet above sea level.

In this issue:

- Storm Preparedness Kit
- Power up your lawncare by going electric
- SmartHub helps make cents of it all
- Understanding monthly peak demand
- Lineworker Appreciation Day: April 8



- View your bill
- Make a payment
- Compare usage by month
- Review known issues
- Report an outage
- Update account information

SmartHub is available online or through an application on your cell phone. Sign up today!

2024 Annual Meeting Events:

Thursday, May 30, 2024
Tuscola Community Building

Tuesday, June 4, 2024
Ford County Fairgrounds

Thursday, June 6, 2024
Iroquois County Fairgrounds

Your Touchstone Energy[®]
Cooperative

Eastern Illini Electric Cooperative * 330 W. Ottawa * Paxton, IL * 60957

800-824-5102 * info@eiec.coop * www.eiec.coop *  facebook.com/easternillini

What to include in a storm preparedness kit

Springtime means stormy weather and storms can cause havoc with power systems. Losing power during a storm is always inconvenient. At Eastern Illini our crews stand ready to restore power whenever and wherever the lights go out. From a member's perspective, there is nothing that can be done to stop severe thunderstorms, lightning, tornadoes, or floods from developing. However, there are things that everyone can do to minimize the impact of severe weather on our lives. What you can do to be prepared:

Stay informed

This can be done by monitoring a weather alert radio, local radio & TV broadcasts, National Weather Service web pages, or various applications on computers and smart phones.

DON'T just rely on one method - especially storm sirens - which are NOT designed to be heard indoors by everyone.

Have an emergency plan

Do this for your home, business, schools and when you are traveling. Designate places to go to seek safe shelter from a tornado or severe thunderstorm. Pick two places to meet in case you are separated from your family or co-workers.

While traveling or when away from home, know the names of the locations you are visiting - especially county and city names.

Prepare yourself and your home for an emergency

Learn how to use a fire extinguisher, how to administer CPR, and how to turn off the electricity, gas and water supplies in your home.

Inspect your home for potential hazards such as weakened trees or limbs, cracked windows, or missing shingles or worn roofing.

With climate changes increasing the frequency of severe weather events, it is more important than ever to be prepared. One important way you can do this is by having an emergency kit in your house.

After a storm, you may not be able to access everything you need, so having a storm preparedness kit readily available is important.

The most essential part of your kit is a supply of food and water for you, your family and your pets. Here are other items to include in your kit:

Flashlight

Extra batteries for the flashlight are also a good idea. If your power is out and you have no way to charge your phone, you might need to rely on a flashlight to get around at night.

Whistle

A whistle can help you signal for help if you are stranded and need search and rescue to hear you.

Fully charged cell phone

Not only should your cell phone be fully charged, but a charger power bank will ensure you can continue to use your cell phone.

Manual Can Opener

Your emergency kit is probably made up of canned food, which lasts for a long time. If you don't have power, you'll need a way to open these cans.

Battery-powered or Hand Cranked Radio

A radio will help you receive updates on the disaster and any known safety risks.

First Aid Kit

Conditions during and after a storm can vary dramatically. You may need to provide immediate care to someone in your family.

Supplies for your pet

Your pet is a member of your family. You will want to have enough of their supplies for several days, as well as a favorite toy to comfort them.

Depending on your individual circumstances, take these additional items into consideration:

- Prescription medication and glasses
- Infant formula and diapers
- Important family documents
- Cash and change
- Fire Extinguisher
- Matches in a waterproof container

While it is important to have these supplies at home, you should also consider having a smaller emergency kit stored in your car or ready to grab if you are evacuated from your home and need to leave quickly.

Once you have your kit built, be sure to maintain it by replacing expired items. It's also a good idea to reevaluate your needs annually. Having a storm preparedness kit will benefit you and your family when the next storm hits.

YOUR KIT SHOULD INCLUDE:



Bottles of water
Nonperishable food
Portable phone charger

Flashlights
Batteries
Can opener



First-aid supplies
Hand sanitizer
Prescriptions

Pain reliever
Warm clothing
Blankets



Battery-operated radio
Toys, books and games
Important documents

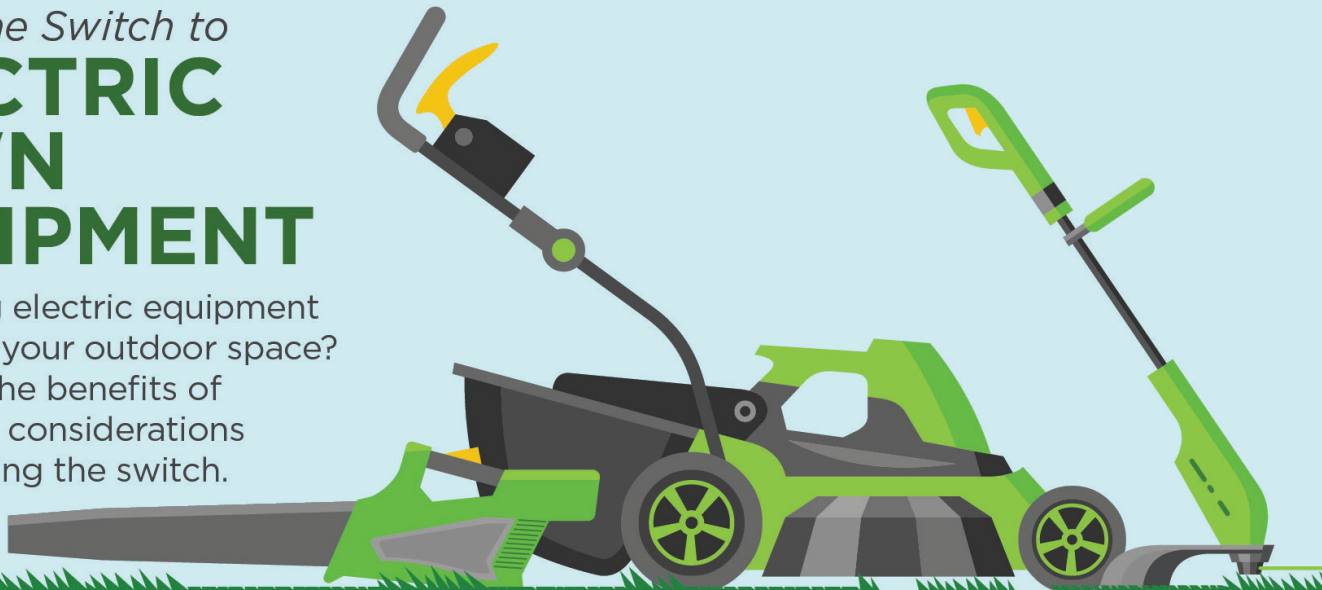
Money
Baby supplies
Pet supplies

WHAT TO CONSIDER WHEN SELECTING ELECTRIC LAWN CARE

Power up your lawn care by going electric

Making the Switch to **ELECTRIC LAWN EQUIPMENT**

Considering electric equipment to maintain your outdoor space? Check out the benefits of electric and considerations before making the switch.



Benefits of Electric Equipment

- Battery-powered equipment produces zero emissions
- No hassle and mess from gasoline and oil
- Quieter and more reliable than gas-powered equipment
- Require less energy to do the same amount of work as gas-powered tools

The landscape of lawn and garden care is evolving, and electric equipment is at the forefront of this change. While electric lawn tools aren't new, advancements in technology and more options mean prices have become more competitive, making electric equipment an accessible option for many consumers.

Electric lawnmowers have come a long way since the days of extension cords tethering you to an outlet. Battery-powered mowers offer the same freedom of movement as gas-powered models but with reduced noise and maintenance.

Battery life was once a major drawback to making the switch to electric lawn tools. But today's growing demand for electric equipment has resulted in

major advancements for lithium-ion batteries, making them more reliable, cost-effective, and efficient. For most consumers, electric lawn tools can get the job done just as well as gas-powered models.

Many electric mowers offer push-button starts, and because they are lighter, they are easier to maneuver around tight turns. Improved batteries provide longer run times to tackle larger spaces.

Like their gas-powered counterparts, electric mowers are available in push, self-propelled/walk-behind and riding models. And there's no need to refill gas cans or change oil and air filters, resulting in less hassle and maintenance. Electric lawn tools have some limitations, so the size and terrain of your outdoor space are important considerations.

Considerations Before Going Electric

- Purchasing from a single brand can streamline charging
- Consider the size of your property and battery run time
- Backup batteries may be needed for larger properties
- Electric equipment is pricier up front

When comparing gas-powered and electric mowers, consider the torque rating—this is the driving force behind a blade's rotation. Electric mowers tend to generate less torque than gas mowers. If you have a challenging outdoor space that includes overgrown brush, tall grass, or hills, torque is a key factor.

Choosing the right type and size mower is particularly important. If you have a large property, consider purchasing an extra battery to ensure uninterrupted workflow. Many manufacturers offer interchangeable batteries. Choosing a single brand can ensure charging compatibility.

Keep in mind that electric equipment requires less maintenance, is less expensive to operate and kinder to the environment.



PROVIDING THE POWER OF DATA AT YOUR FINGERTIPS

SmartHub helps make cents of it all

Your bill this month will look different from bills you have received in the past because it includes a demand component. This new rate structure separates the costs for energy (kWh) and demand (kW). The restructured rates by rate class are provided below.

You may be asking yourself what is available to manage my electric use? Well, the answer is to sign up for SmartHub. It tracks electric use and offers many management tools:

- Analyze and understand trends to find ways to use less
- Quickly and easily view and pay your bill
- Compare your electric use month to month
- Review how weather trends can affect your energy use

With SmartHub, the power of data is at your fingertips. SmartHub is a free mobile and online tool that delivers accurate, timely account information that helps you know when and how you are using energy.

SmartHub has several features that make managing your account as easy as possible. Whether on your computer, smartphone, or tablet, you'll be able to pay your bill, view your usage, and even report outages.

As soon as you log in, you can view your billing history and make a payment with just a couple of clicks. You'll be able to see your current bill, along with bills from the previous month. Not only will you see your billing history, but you'll be able to view how much energy you use. You can see trends over time and take steps to lower your bill. Making payments through SmartHub is fast and easy and you'll be able to securely store your payment information for future transactions.

You'll also be able to see important notices with SmartHub. You can even select how you want to be notified about your bill, including emails and text messages.

Tracking your electric use will help you determine if you are using more energy than usual and when you are using that energy, so you can make adjustments before you get an unexpectedly large bill.

Life is fast, and can be hectic, but paying your electric bill doesn't have to be complicated. With SmartHub, you can manage your account like never before! Call and talk with a Member Care Representative at 800-824-5102 and we can provide more information about SmartHub and walk you through signing up. Or go to the Eastern Illini website: www.eiec.coop and sign up today!

NEW RATES ARE NOW IN EFFECT

Rates 1 & 7 General (single phase)	2023	2024
Base Charge	\$42.50	\$53.00
Demand	n/a	\$2.12
First 1,000 kWh	13.945	12.470
Over 1,000 kWh	9.945	9.470

Rates 20 & 7E Electric Heat (single phase)	2023		2024	
	Summer	Winter	Summer	Winter
Base Charge	\$55		\$63	
Demand	n/a		\$1.90	
First 1,000 kWh	13.582	13.582	12.470	12.470
Over 1,000 kWh	9.582	8.082	9.470	8.810

Rate 5 General (three phase)	2023	2024
Base Charge	\$83	\$100
Demand	n/a	\$1.96
First 1,000 kWh	14.384	13.360
Over 1,000 kWh	10.384	9.860

Rate 8 Electric Heat (three phase)	2023		2024	
	Summer	Winter	Summer	Winter
Base Charge	\$83		\$100	
Demand	n/a		\$1.96	
First 1,000 kWh	11.630	11.630	11.430	10.930
Over 1,000 kWh	11.130	9.130	11.380	8.880

Rate 24 Large Service (three phase)	2023		2024	
	Summer	Winter	Summer	Winter
Base Charge	\$1.10/kVa		\$1.10/kVA	
Demand	\$5.02		\$5.02	
All kWh	10.107	8.107	10.340	9.340

DEMAND IS THE MAX POWER USED OVER A 15-MINUTE INTERVAL

Understanding monthly peak demand

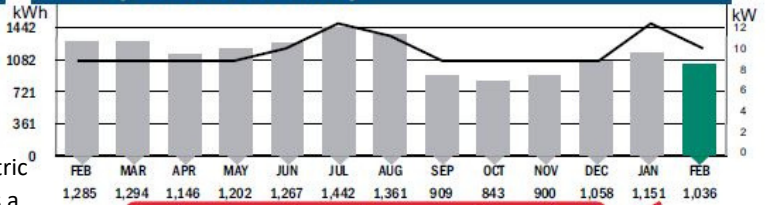


Average Daily Electric Use

TIME PERIOD	DAILY USE (KWH)	DAILY COST
Current month	36	\$7.25
Last month	37	\$7.33
This month last year	46	\$8.54

On the front of your bill will be a monthly electric use history which will show your electric use (kWh) in a bar graph and demand (kW) as a solid line. This information gives you a visual reference about when and how you use electricity.

Monthly Electric Use History



Electric use (kWh) Demand (kW)

SAMPLE BILL

Account #123456789

Previous Billing Details

	DATE	AMOUNT
Previous balance		\$230.76
Payment received	02/02/24	(\$230.76)
Total balance prior to this billing		\$0.00

Meter Reading Details

Service location	1234 E 1234 NORTH RD			
Meter number	123456789			
CURRENT READING	PREVIOUS READING	METER MULTIPLIER	KWH	
(55,384 — 54,348)	x	1	= 1,036	

Peak demand 10.76 kW, occurred on 1/29

Current Bill Information

Rate 1 - General Service
Service for 01/27/24 - 02/25/24 (29 days)

Distribution		Base		\$53.00
	Delivery (first 1,000 kWh)	1,000 kWh @ 0.01745		\$17.45
	Delivery (over 1,000 kWh)	36 kWh @ 0.00745		\$0.27
	Demand	10.76 kW @ 2.12		\$22.81
Electric supply				
	Energy	1,036 kWh @ 0.0514		\$53.25
	Transmission	1,036 kWh @ 0.022		\$22.79
	Generation (first 1,000 kWh)	1,000 kWh @ 0.03385		\$33.85
	Generation (over 1,000 kWh)	36 kWh @ 0.01385		\$0.50
	Power cost adjustment	1,036 kWh @ 0.003		\$3.11
Total electric use: 1,036 kWh		Total energy charges:	\$207.03	
Tax and other fees		Public Utility Tax	\$3.32	
Total tax and other fees			\$3.32	
Total Current Charges			\$210.35	

On the back of your bill, you will see what your peak demand was for the month and on what day it happened. Peak demand may vary every month.

The new base charge is reflected as a line item under Distribution. The base charge represents a portion of the fixed costs of making electricity available to you 24/7.

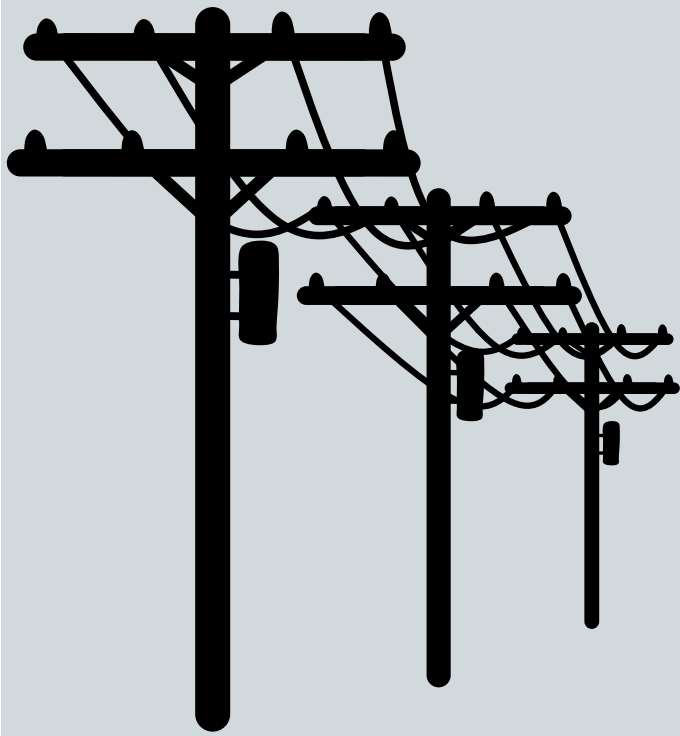
The demand line will show the peak demand for the month and calculate the cost of that peak demand.

WHAT IS DEMAND? Demand refers to the maximum amount of power that is being consumed at a given time. It is related to, but different than, kilowatt hours (kWh), the amount of power used over a period of time. Your demand charge is based upon the maximum amount of power required over a 15-minute interval in a given month.

HOW TO MANAGE DEMAND: Effective electricity demand management involves flattening your profile of electricity use throughout a billing period to avoid a high peak demand. Peak demand is defined as the highest average use of electricity for a 15-minute interval throughout the monthly billing period.

The key to managing your demand is to ensure you don't turn on too many appliances all at once. For example, set your dishwasher to a delayed start and run your electric clothes dryer at a different time. You can control your demand and lower your electric bill by shifting power-intensive processes so they are staggered over time. Consider using timers or sensors to automatically turn devices, lighting, and air off when not needed. Optimize start up and power-down times.





LINEWORKER APPRECIATION DAY

APRIL 8, 2024

Eastern Illini Electric Cooperative



We greatly appreciate the hard work and dedication of Eastern Illini lineworkers. They work safely and tirelessly to ensure our members have power 24/7. Our team of linemen maintain and upgrade more than 4,400 miles of energized line across ten counties. It's a big job - and, one they do exceptionally well.